

Discover which Kelpies character you are!

Are you practical Helen, heroic Samuel or feisty Izzie?
Take the Kelpies Character Quiz to see which book you could be starring in.

1. You find an old chest. What do you hope is inside it?
 - a. Anything from the past would be cool – maps, treasure, journals or letters.
 - b. Huge spiders or scorpions or both! You love creepy crawly creatures.
 - c. A magical book or perhaps an instrument.
2. How far would you go to solve a mystery? Would you...
 - a. Creep about a haunted house by yourself at midnight.
 - b. Stage your own stake out and try to catch the culprit in the act.
 - c. Sneak out after bedtime to meet your friends.
3. If someone you didn't like had fallen and injured themselves would you...
 - a. Stay with them while you send your friend to get help because you know that you are the brave one.
 - b. Call an ambulance and get the paramedics to help.
 - c. Get out your trusty first aid kit. So what if they don't want your help – you are going to give it to them anyway.
4. What of these things is your favourite?
 - a. Playing with your friends, especially outside.
 - b. Looking after animals. You know everything there is to know about your favourite animals.
 - c. Playing a musical instrument because you can make up your own songs.
5. When you dress up smartly do you look...
 - a. Really cool. Obviously!
 - b. Very uncomfortable. You hate putting on a 'nice' outfit and doing your hair.
 - c. Pretty good. Sometimes it's ok to get dressed up for something special like a party or performance.
6. Someone is shouting at you or your friends. Do you...
 - a. Shout back. Especially if they are hurting your friends. You always stand up for your friends
 - b. Roll your eyes and look bored but be really angry inside.
 - c. Think up a really clever comeback that shuts them up.
7. What is your special skill?
 - a. Drawing maps.
 - b. Memorising the latin names of animals.
 - c. Solving riddles.
8. What are you most afraid of?
 - a. Ghosts.
 - b. Losing one of your pets.
 - c. Not being able to help someone when they are hurt.

Continued on page 2...



Discover which Kelpies character you are!

9. Where is the most unusual place that you have visited?
 - a. A waterfall in the middle of the woods.
 - b. A dark cave by the seashore.
 - c. A circle of standing stones.

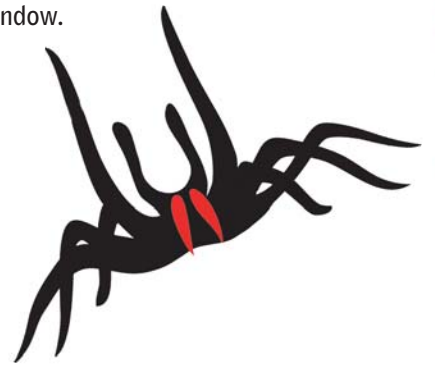
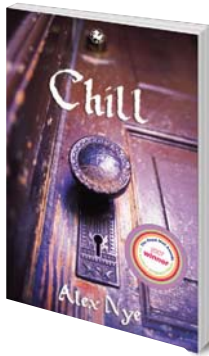
10. You hear a strange sound in the middle of the night. What is it most likely to be...
 - a. A mysterious voice whispering – I'm going to get you!
 - b. The sea washing up against the shore near your bedroom window.
 - c. Clip clop clip scrape

You answered...

Mostly As

You are heroic Samuel from *Chill!*

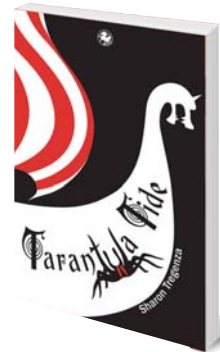
You like finding out about history and discovering secrets. You are stubborn and won't give up until you find an answer. You are not afraid of taking risks — even if you are a little bit scared of ghosts, especially ones that whisper that they are out to get you! You love to run about outside and be active. You always put your friends first and you will stand up against bullies no matter what.



Mostly Bs

You are feisty Izzie from *Tarantula Tide!*

You know loads of interesting facts about your favourite animals, which really impresses your friends. You are not afraid of spiders, scorpions or lizards and you don't understand why some people don't like them. You love your pets just as much as your friends and family. You are brave and stubborn and really don't like glitzy, glamorous, girly things – you would much rather be running about and getting into trouble!



Mostly Cs

You are practical Helen from the *First Aid for Fairies* series!

You know that practical does not mean boring. You are really creative. You love playing and listening to music. Hanging out with your friends is great fun but you always make time for rehearsals. You know loads of useful things like first aid skills and how to solve riddles. You always go out of your way to help someone even if they pretend they don't need it or you don't get on with them.

